

C A S E S T U D Y

Routing

Phase I: Project Description

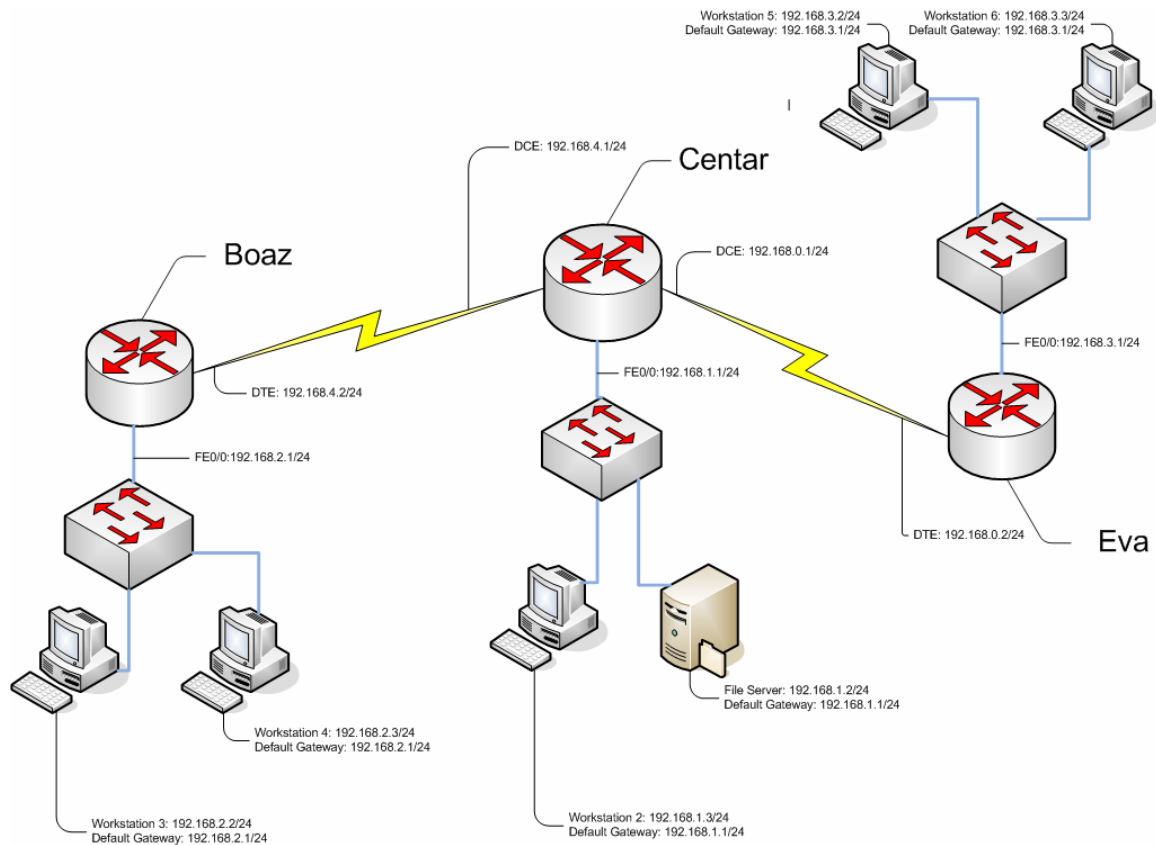
Network address: **192.168.0.0**

Number of subnets: **5** (za svaku mrežu prikacenu na odgovarajući ruter po jedna mreža; plus po jedna mreža za svaki od serijskih veza između dva rutera).

Routing protocol: **IGRP**

Subnets #	Subnet address	Subnet mask	First address	Last address	Broadcast address
1	192.168.0.0	255.255.255.0	192.168.0.1	192.168.0.254	192.168.0.255
2	192.168.1.0	255.255.255.0	192.168.1.1	192.168.1.254	192.168.1.255
3	192.168.2.0	255.255.255.0	192.168.2.1	192.168.2.254	192.168.2.255
4	192.168.3.0	255.255.255.0	192.168.3.1	192.168.3.254	192.168.3.255
5	192.168.4.0	255.255.255.0	192.168.4.1	192.168.4.254	192.168.4.255

Phase II: IP Addressing



Phase 3: Basic Router and Workstation Configuration

Hostname	Boaz	Center	Eva
Console Password	cisco	cisco	cisco
Secret Password	class	class	class
VTY Password	cisco	cisco	cisco
Serial 0/0 IP address	192.168.4.2/24	192.168.4.1/24	192.168.0.2/24
Serial 0/1 IP address	-	192.168.0.1/24	-
* Serial 0/0 Clock Rate	-	56000	-
* Serial 0/1 Clock Rate	-	56000	-
Fa 0/0 IP address	192.168.2.1/24	192.168.1.1/24	192.168.3.1/24
Fa 0/1 IP address	-	-	-
Enable the interfaces	Included in configuration	Included in configuration	Included in configuration
Add Routing Protocol	Included in configuration	Included in configuration	Included in configuration
Add Network Statements	Included in configuration	Included in configuration	Included in configuration
* Host Table – contains all routers and servers	Included in configuration	Included in configuration	Included in configuration
Message of the Day	Included in configuration	Included in configuration	Included in configuration
Serial 0/0 description	Included in configuration	Included in configuration	Included in configuration
Serial 0/1 description	Included in configuration	Included in configuration	Included in configuration
Fa 0/0 description	Included in configuration	Included in configuration	Included in configuration
Fa 0/1 description	Included in configuration	Included in configuration	Included in configuration

1. Boaz configuration:

```

hostname BOAZ
!
enable secret class
enable password cisco
!
ip subnet-zero
ip host centar 192.168.4.1
ip host eva 192.168.0.2
ip host station3 192.168.2.2
ip host station4 192.168.2.3
!
interface FastEthernet0/0
ip address 192.168.2.1 255.255.255.0
ip access-group 101 in
duplex auto
speed auto
!
interface Serial0/0
ip address 192.168.4.2 255.255.255.0
no fair-queue
!
interface Serial0/1
no ip address
shutdown

```

```

!
router igrp 5
 network 192.168.2.0
 network 192.168.4.0
!
ip classless
no ip http server
!
access-list 101 permit ip 192.168.2.0 0.0.0.255 host 192.168.1.2
access-list 101 permit icmp 192.168.2.0 0.0.0.255 any echo-reply
!
!
line con 0
 password cisco
 login
 transport input none
line aux 0
line vty 0 4
 password cisco
 login
!
end

```

2. Centar configuration:

```

hostname CENTAR
!
enable secret class
enable password cisco
!
ip subnet-zero
ip host boaz 192.168.4.2
ip host eva 192.168.0.2
ip host server 192.168.1.2
ip host station2 192.168.1.3
!
interface FastEthernet0/0
 ip address 192.168.1.1 255.255.255.0
 no shutdown
 duplex auto
 speed auto
!
interface Serial0/0
 ip address 192.168.4.1 255.255.255.0
 clockrate 56000
 no shutdown
 no fair-queue
!
interface Serial0/1
 ip address 192.168.0.1 255.255.255.0
 clockrate 56000
 no shutdown
!
router igrp 5
 network 192.168.0.0
 network 192.168.1.0
 network 192.168.4.0
!
ip classless
no ip http server
!
line con 0
 password cisco
 login

```

```
transport input none
line aux 0
line vty 0 4
password cisco
login
!
no scheduler allocate
end
```

3. Eva configuration:

```
hostname EVA
!
enable secret class
enable password cisco
!
ip subnet-zero
ip host boaz 192.168.4.2
ip host centar 192.168.0.1
ip host station6 192.168.3.3
ip host station5 192.168.3.2
!
interface FastEthernet0/0
ip address 192.168.3.1 255.255.255.0
ip access-group 103 in
duplex auto
speed auto
!
interface Serial0/0
ip address 192.168.0.2 255.255.255.0
no shutdown
!
interface Serial0/1
no ip address
shutdown
!
router igrp 5
network 192.168.0.0
network 192.168.3.0
!
ip classless
no ip http server
!
access-list 103 permit ip 192.168.3.0 0.0.0.255 host 192.168.1.2
access-list 103 permit icmp 192.168.3.0 0.0.0.255 192.168.1.0
0.0.0.255
!
!
line con 0
password cisco
login
transport input none
line aux 0
line vty 0 4
password cisco
login
!
no scheduler allocate
end
```

Phase 4: Access Control Lists

Uključene u configuration file-ove routera u predhodnoj tački !

Phase 5: Documenting the Network

BOAZ:

- Configuration

```
sh cdp
Global CDP information:
  Sending CDP packets every 60 seconds
  Sending a holdtime value of 180 seconds
  Sending CDPv2 advertisements is enabled
```

```
BOAZ#sh cdp neighbors
Capability Codes: R - Router, T - Trans Bridge, B - Source Route Bridge
                  S - Switch, H - Host, I - IGMP, r - Repeater
```

Device ID	Local Intrfce	Holdtme	Capability	Platform	Port ID
CENTAR	Ser 0/0	154	R	2620	Ser 0/0
Swit ch	Fas 0/0	156	T S	WS-C2924-XFas	0/3

```
BOAZ#sh ip rpi route
Codes: C - connected, S - static, I - IGRP, R - RIP, M - mobile, B - BGP
        D - EIGRP, EX - EIGRP external, O - OSPF, IA - OSPF inter area
        N1 - OSPF NSSA external type 1, N2 - OSPF NSSA external type 2
        E1 - OSPF external type 1, E2 - OSPF external type 2, E - EGP
        i - IS-IS, L1 - IS-IS level-1, L2 - IS-IS level-2, ia - IS-IS inter area
        * - candidate default, U - per-user static route, o - ODR
        P - periodic downloaded static route
```

Gateway of last resort is not set

```
C   192.168.4.0/24 is directly connected, Serial 0/0
I   192.168.0.0/24 [100/10476] via 192.168.4.1, 00:00:28, Serial 0/0
I   192.168.1.0/24 [100/8486] via 192.168.4.1, 00:00:28, Serial 0/0
C   192.168.2.0/24 is directly connected, FastEthernet0/0
I   192.168.3.0/24 [100/10486] via 192.168.4.1, 00:00:28, Serial 0/0
```

```
BOAZ#sh ip protocol
Routing Protocol is "igrp 5"
  Sending updates every 90 seconds, next due in 1 seconds
  Invalid after 270 seconds, hold down 280, flushed after 630
  Outgoing update filter list for all interfaces is
  Incoming update filter list for all interfaces is
  Default networks flagged in outgoing updates
  Default networks accepted from incoming updates
  IGRP metric weight K1=1, K2=0, K3=1, K4=0, K5=0
  IGRP maximum hopcount 100
  IGRP maximum metric variance 1
  Redistributing: igrp 5
  Routing for Networks:
    192.168.2.0
    192.168.4.0
  Routing Information Sources:
    Gateway         Distance         Last Update
    192.168.4.1     100              00:00:34
  Distance: (default is 100)
```

```
BOAZ#sh ip interface brief
Interface          IP-Address      OK? Method Status          Protocol
FastEthernet0/0    192.168.2.1     YES manual up              up
Serial0/0           192.168.4.2     YES manual up              up
Serial0/1           unassigned      YES manual administratively down down
```

```
BOAZ#sh vers
Cisco Internetwork Operating System Software
IOS (tm) C2600 Software (C2600-IS-M), Version 12.1(3a)T4, RELEASE SOFTWARE (fc1)
Copyright (c) 1986-2000 by cisco Systems, Inc.
Compiled Tue 03-Oct-00 13:07 by ccai
Image text-base: 0x80008088, data-base: 0x80F195CC
```

```
ROM: System Bootstrap, Version 11.3(2)XA4, RELEASE SOFTWARE (fc1)
```

BOAZ uptime is 2 hours, 28 minutes
System returned to ROM by power-on
System image file is "flash:c2600-is-mz.121-3a.T4"

cisco 2620 (MPC860) processor (revision 0x102) with 61440K/4096K bytes of memory.
Processor board ID JAD0434015U (4077685882)
M860 processor: part number 0, mask 49
Bridging software.
X.25 software, Version 3.0.0.
1 FastEthernet/IEEE 802.3 interface(s)
2 Serial network interface(s)
32K bytes of non-volatile configuration memory.
16384K bytes of processor board System flash (Read/Write)
Configuration register is 0x2102

BOAZ#sh hosts
Default domain is not set
Name/address lookup uses domain service
Name servers are 255.255.255.255

Host	Flags	Age	Type	Address(es)
centar	(perm, OK)	0	IP	192.168.4.1
eva	(perm, OK)	0	IP	192.168.0.2
station3	(perm, OK)	0	IP	192.168.2.2
station4	(perm, OK)	2	IP	192.168.2.3

- Security

```
sh ip interface
FastEthernet0/0 is up, line protocol is up
  Internet address is 192.168.2.1/24
  Broadcast address is 255.255.255.255
  Address determined by setup command
  MTU is 1500 bytes
  Helper address is not set
  Directed broadcast forwarding is disabled
  Outgoing access list is not set
  Inbound access list is 101
  Proxy ARP is enabled
  Security level is default
  Split horizon is enabled
  ICMP redirects are always sent
  ICMP unreachable are always sent
  ICMP mask replies are never sent
  IP fast switching is enabled
  IP fast switching on the same interface is disabled
  IP Flow switching is disabled
  IP Feature Fast switching turbo vector
  IP multicast fast switching is enabled
  IP multicast distributed fast switching is disabled
  IP route-cache flags are Fast
  Router Discovery is disabled
  IP output packet accounting is disabled
  IP access violation accounting is disabled
  TCP/IP header compression is disabled
  RTP/IP header compression is disabled
  Probe proxy name replies are disabled
  Policy routing is disabled
  Network address translation is disabled
  WCCP Redirect outbound is disabled
  WCCP Redirect inbound is disabled
  WCCP Redirect exclude is disabled
  BGP Policy Mapping is disabled
Serial0/0 is up, line protocol is up
  Internet address is 192.168.4.2/24
  Broadcast address is 255.255.255.255
  Address determined by setup command
  MTU is 1500 bytes
  Helper address is not set
  Directed broadcast forwarding is disabled
  Outgoing access list is not set
  Inbound access list is not set
  Proxy ARP is enabled
  Security level is default
  Split horizon is enabled
  ICMP redirects are always sent
  ICMP unreachable are always sent
  ICMP mask replies are never sent
  IP fast switching is enabled
```

```

IP fast switching on the same interface is enabled
IP Flow switching is disabled
IP Feature Fast switching turbo vector
IP multicast fast switching is enabled
IP multicast distributed fast switching is disabled
IP route-cache flags are Fast
Router Discovery is disabled
IP output packet accounting is disabled
IP access violation accounting is disabled
TCP/IP header compression is disabled
RTP/IP header compression is disabled
Probe proxy name replies are disabled
Policy routing is disabled
Network address translation is disabled
WCCP Redirect outbound is disabled
WCCP Redirect inbound is disabled
WCCP Redirect exclude is disabled
BGP Policy Mapping is disabled
Serial0/1 is administratively down, line protocol is down
Internet protocol processing disabled

```

```

BOAZ#sh ip access-lists
Extended IP access list 101
  permit ip 192.168.2.0 0.0.0.255 host 192.168.1.2 (9 matches)
  permit icmp 192.168.2.0 0.0.0.255 any echo-reply (36 matches)
  permit ip 192.168.3.0 0.0.0.255 host 192.168.1.2
  permit icmp 192.168.3.0 0.0.0.255 192.168.1.0 0.0.0.255

```

CENTAR:

- Configuration

```

sh cdp
Global CDP information:
  Sending CDP packets every 60 seconds
  Sending a holdtime value of 180 seconds
  Sending CDPv2 advertisements is enabled

```

```

CENTAR#sh cdp neighbors
Capability Codes: R - Router, T - Trans Bridge, B - Source Route Bridge
                  S - Switch, H - Host, I - IGMP, r - Repeater

```

Device ID	Local Intrfce	Holdtme	Capability	Platform
Port ID				
BOAZ	Ser 0/0	121	R	2620 Ser 0/0
Switch	Fas 0/0	179	T S	WS-C2924-XFas 0/10
EVA	Ser 0/1	127	R	2620 Ser 0/0

```

CENTAR#show ip route
Codes: C - connected, S - static, I - IGRP, R - RIP, M - mobile, B -

```

```

BGP
  D - EIGRP, EX - EIGRP external, O - OSPF, IA - OSPF inter area
  N1 - OSPF NSSA external type 1, N2 - OSPF NSSA external type 2
  E1 - OSPF external type 1, E2 - OSPF external type 2, E - EGP
  I - IS-IS, L1 - IS-IS level-1, L2 - IS-IS level-2, ia - IS-IS

```

```

inter area
  * - candidate default, U - per-user static route, o - ODR
  P - periodic downloaded static route

```

Gateway of last resort is not set

```

C    192.168.4.0/24 is directly connected, Serial0/0
C    192.168.0.0/24 is directly connected, Serial0/1
C    192.168.1.0/24 is directly connected, FastEthernet0/0
I    192.168.2.0/24 [100/8486] via 192.168.4.2, 00:00:14, Serial0/0
I    192.168.3.0/24 [100/8486] via 192.168.0.2, 00:00:17, Serial0/1

```

```

CENTAR#sh ip protocol
Routing Protocol is "igrp 5"
  Sending updates every 90 seconds, next due in 21 seconds
  Invalid after 270 seconds, hold down 280, flushed after 630
  Outgoing update filter list for all interfaces is
  Incoming update filter list for all interfaces is
  Default networks flagged in outgoing updates
  Default networks accepted from incoming updates
  IGRP metric weight K1=1, K2=0, K3=1, K4=0, K5=0

```

```

IGRP maximum hopcount 100
IGRP maximum metric variance 1
Redistributing: igmp 5
Routing for Networks:
  192.168.0.0
  192.168.1.0
  192.168.4.0
Routing Information Sources:
  Gateway         Distance      Last Update
  192.168.0.2     100          00:00:23
  192.168.4.2     100          00:00:20
Distance: (default is 100)

CENTAR#sh ip interface brief
Interface                IP-Address      OK? Method Status
      Protocol
FastEthernet0/0          192.168.1.1    YES manual up
      up
Serial0/0                 192.168.4.1    YES manual up
      up
Serial0/1                 192.168.0.1    YES manual up
      up

CENTAR#sh ver
Cisco Internetwork Operating System Software
IOS (tm) C2600 Software (C2600-IS-M), Version 12.1(3a)T4,  RELEASE

SOFTWARE (fc1)
Copyright (c) 1986-2000 by cisco Systems, Inc.
Compiled Tue 03-Oct-00 13:07 by ccai
Image text-base: 0x80008088, data-base: 0x80F195CC

ROM: System Bootstrap, Version 11.3(2)XA4, RELEASE SOFTWARE (fc1)

CENTAR uptime is 33 minutes
System returned to ROM by reload
System image file is "flash:c2600-is-mz.121-3a.t4"

cisco 2620 (MPC860) processor (revision 0x102) with 61440K/4096K bytes
of memory.
Processor board ID JAB0417087X (1893250696)
M860 processor: part number 0, mask 49
Bridging software.
X.25 software, Version 3.0.0.
1 FastEthernet/IEEE 802.3 interface(s)
2 Serial network interface(s)
32K bytes of non-volatile configuration memory.
16384K bytes of processor board System flash (Read/Write)
Configuration register is 0x2102

CENTAR#sh hosts
Default domain is not set
Name/address lookup uses domain service
Name servers are 255.255.255.255

Host                Flags      Age Type   Address(es)
station2            (perm, OK) 0 IP     192.168.1.3
server              (perm, OK) 0 IP     192.168.1.2
eva                 (perm, OK) 0 IP     192.168.0.2
boaz                (perm, OK) 0 IP     192.168.4.2

```

- Security

```

sh ip interface
FastEthernet0/0 is up, line protocol is up
Internet address is 192.168.1.1/24
Broadcast address is 255.255.255.255
Address determined by setup command
MTU is 1500 bytes
Helper address is not set
Directed broadcast forwarding is disabled
Outgoing access list is 102
Inbound access list is not set
Proxy ARP is enabled
Security level is default
Split horizon is enabled
ICMP redirects are always sent

```

ICMP unreachable are always sent
ICMP mask replies are never sent
IP fast switching is enabled
IP fast switching on the same interface is disabled
IP Flow switching is disabled
IP Feature Fast switching turbo vector
IP multicast fast switching is enabled
IP multicast distributed fast switching is disabled
IP route-cache flags are Fast
Router Discovery is disabled
IP output packet accounting is disabled
IP access violation accounting is disabled
TCP/IP header compression is disabled
RTP/IP header compression is disabled
Probe proxy name replies are disabled
Policy routing is disabled
Network address translation is disabled
WCCP Redirect outbound is disabled
WCCP Redirect inbound is disabled
WCCP Redirect exclude is disabled
BGP Policy Mapping is disabled
Serial0/0 is up, line protocol is up
Internet address is 192.168.4.1/24
Broadcast address is 255.255.255.255
Address determined by setup command
MTU is 1500 bytes
Helper address is not set
Directed broadcast forwarding is disabled
Outgoing access list is not set
Inbound access list is not set
Proxy ARP is enabled
Security level is default
Split horizon is enabled
ICMP redirects are always sent
ICMP unreachable are always sent
ICMP mask replies are never sent
IP fast switching is enabled
IP fast switching on the same interface is enabled
IP Flow switching is disabled
IP Feature Fast switching turbo vector
IP multicast fast switching is enabled
IP multicast distributed fast switching is disabled
IP route-cache flags are Fast
Router Discovery is disabled
IP output packet accounting is disabled
IP access violation accounting is disabled
TCP/IP header compression is disabled
RTP/IP header compression is disabled
Probe proxy name replies are disabled
Policy routing is disabled
Network address translation is disabled
WCCP Redirect outbound is disabled
WCCP Redirect inbound is disabled
WCCP Redirect exclude is disabled
BGP Policy Mapping is disabled
Serial0/1 is up, line protocol is up
Internet address is 192.168.0.1/24
Broadcast address is 255.255.255.255
Address determined by setup command
MTU is 1500 bytes
Helper address is not set
Directed broadcast forwarding is disabled
Outgoing access list is not set
Inbound access list is not set
Proxy ARP is enabled
Security level is default
Split horizon is enabled
ICMP redirects are always sent
ICMP unreachable are always sent
ICMP mask replies are never sent
IP fast switching is enabled
IP fast switching on the same interface is enabled
IP Flow switching is disabled
IP Feature Fast switching turbo vector
IP multicast fast switching is enabled
IP multicast distributed fast switching is disabled
IP route-cache flags are Fast
Router Discovery is disabled
IP output packet accounting is disabled
IP access violation accounting is disabled
TCP/IP header compression is disabled

RTP/IP header compression is disabled
Probe proxy name replies are disabled
Policy routing is disabled
Network address translation is disabled
WCCP Redirect outbound is disabled
WCCP Redirect inbound is disabled
WCCP Redirect exclude is disabled
BGP Policy Mapping is disabled

```
CENTAR#sh ip access-lists
Extended IP access list 102
  permit tcp any any established (34 matches)
  permit ip any host 192.168.1.2 (24 matches)
```

EVA:

- Configuration

```
sh cdp
Global CDP information:
  Sending CDP packets every 60 seconds
  Sending a holdtime value of 180 seconds
  Sending CDPv2 advertisements is enabled
EVA#sh cdp neighbors
Capability Codes: R - Router, T - Trans Bridge, B - Source Route Bridge
                  S - Switch, H - Host, I - IGMP, r - Repeater

Device ID      Local Intrfce  Holdtme   Capability  Platform  Port ID
CENTAR        Ser 0/0        153       R           2620      Ser 0/1
Switch        Fas 0/0        156       T S        WS-C2924-XFas 0/17
```

```
EVA#sh ip route
Codes: C - connected, S - static, I - IGRP, R - RIP, M - mobile, B - BGP
       D - EIGRP, EX - EIGRP external, O - OSPF, IA - OSPF inter area
       N1 - OSPF NSSA external type 1, N2 - OSPF NSSA external type 2
       E1 - OSPF external type 1, E2 - OSPF external type 2, E - EGP
       i - IS-IS, L1 - IS-IS level-1, L2 - IS-IS level-2, ia - IS-IS inter area
       * - candidate default, U - per-user static route, o - ODR
       P - periodic downloaded static route
```

Gateway of last resort is not set

```
I   192.168.4.0/24 [100/10476] via 192.168.0.1, 00:00:41, Serial0/0
C   192.168.0.0/24 is directly connected, Serial0/0
I   192.168.1.0/24 [100/8486] via 192.168.0.1, 00:00:41, Serial0/0
I   192.168.2.0/24 [100/10486] via 192.168.0.1, 00:00:41, Serial0/0
C   192.168.3.0/24 is directly connected, FastEthernet0/0
```

```
EVA#sh ip prot
Routing Protocol is "igrp 5"
  Sending updates every 90 seconds, next due in 77 seconds
  Invalid after 270 seconds, hold down 280, flushed after 630
  Outgoing update filter list for all interfaces is
  Incoming update filter list for all interfaces is
  Default networks flagged in outgoing updates
  Default networks accepted from incoming updates
  IGRP metric weight K1=1, K2=0, K3=1, K4=0, K5=0
  IGRP maximum hopcount 100
  IGRP maximum metric variance 1
  Redistributing: igrp 5
  Routing for Networks:
    192.168.0.0
    192.168.3.0
  Routing Information Sources:
    Gateway         Distance      Last Update
    192.168.0.1     100          00:00:48
  Distance: (default is 100)
```

```
EVA#sh ip interface brief
Interface      IP-Address      OK? Method Status      Protocol
FastEthernet0/0 192.168.3.1     YES manual up          up
Serial0/0       192.168.0.2     YES SLARP up          up
Serial0/1       unassigned      YES manual administratively down down
```

```
EVA#sh vers
Cisco Internetwork Operating System Software
IOS (tm) C2600 Software (C2600-IS-M), Version 12.1(3a)T4, RELEASE SOFTWARE (fc1)
Copyright (c) 1986-2000 by Cisco Systems, Inc.
Compiled Tue 03-Oct-00 13:07 by ccai
```

Image text-base: 0x80008088, data-base: 0x80F195CC

ROM: System Bootstrap, Version 11.3(2)XA4, RELEASE SOFTWARE (fc1)

EVA uptime is 26 minutes
System returned to ROM by reload
System image file is "flash:c2600-is-mz.121-3a.T4"

cisco 2620 (MPC860) processor (revision 0x102) with 61440K/4096K bytes of memory.
Processor board ID JAD04490AYF (3146017443)
M860 processor: part number 0, mask 49
Bridging software.
X.25 software, Version 3.0.0.
1 FastEthernet/IEEE 802.3 interface(s)
2 Serial network interface(s)
32K bytes of non-volatile configuration memory.
16384K bytes of processor board System flash (Read/Write)
Configuration register is 0x2102

EVA#sh hosts
Default domain is not set
Name/address lookup uses domain service
Name servers are 255.255.255.255

Host	Flags	Age	Type	Address(es)
station5	(perm, OK)	0	IP	192.168.3.2
station6	(perm, OK)	0	IP	192.168.3.3
centar	(perm, OK)	0	IP	192.168.0.1
boaz	(perm, OK)	0	IP	192.168.4.2

- Security

EVA#show ip interface
FastEthernet0/0 is up, line protocol is up
Internet address is 192.168.3.1/24
Broadcast address is 255.255.255.255
Address determined by setup command
MTU is 1500 bytes
Helper address is not set
Directed broadcast forwarding is disabled
Outgoing access list is 103
Inbound access list is not set
Proxy ARP is enabled
Security level is default
Split horizon is enabled
ICMP redirects are always sent
ICMP unreachable are always sent
ICMP mask replies are never sent
IP fast switching is enabled
IP fast switching on the same interface is disabled
IP Flow switching is disabled
IP Feature Fast switching turbo vector
IP multicast fast switching is enabled
IP multicast distributed fast switching is disabled
IP route-cache flags are Fast
Router Discovery is disabled
IP output packet accounting is disabled
IP access violation accounting is disabled
TCP/IP header compression is disabled
RTP/IP header compression is disabled
Probe proxy name replies are disabled
Policy routing is disabled
Network address translation is disabled
WCCP Redirect outbound is disabled
WCCP Redirect inbound is disabled
WCCP Redirect exclude is disabled
BGP Policy Mapping is disabled

EVA#show ip access-lists
Extended IP access list 103
permit ip 192.168.3.0 0.0.0.255 host 192.168.1.2
permit icmp 192.168.3.0 0.0.0.255 192.168.1.0 0.0.0.255